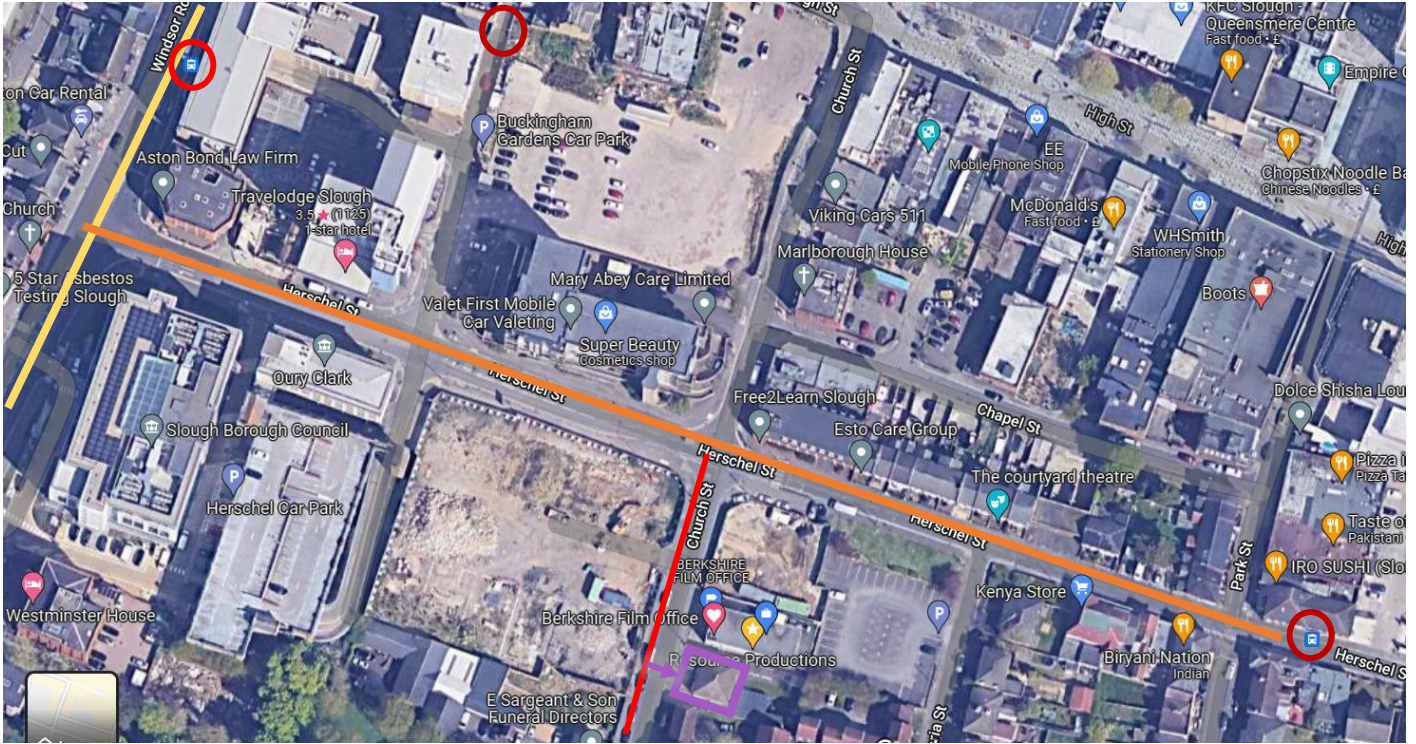


Creative Collective Meet Up 15th Nov: Parking and Travel to 29 Church Street



The venue of the Creative Collective Meet Up is 29 Church Street, Slough, SL1 1PL

The what3words for the entrance to the venue is `///cult.facing.cubs`

What3words is a global location app that gives a unique 3-word code to your precise location. It is also used by emergency services and delivery services.

BUSES

○ Landmark Place, ○ Herschel Street and Queensmere Centre (Stop P) are the closest bus stops to 29 Church Street.

Landmark Place Buses

- 2- to Dedworth
- 6- to Wexham Court
- 8- to Heathrow Airport, Terminal 5
- 15- to Eton Wick
- 702 Greenline- To Legoland
- 703 Greenline- To Heathrow Airport, Terminal 5

Herschel Street Bus & Queensmere Centre (Stop P)

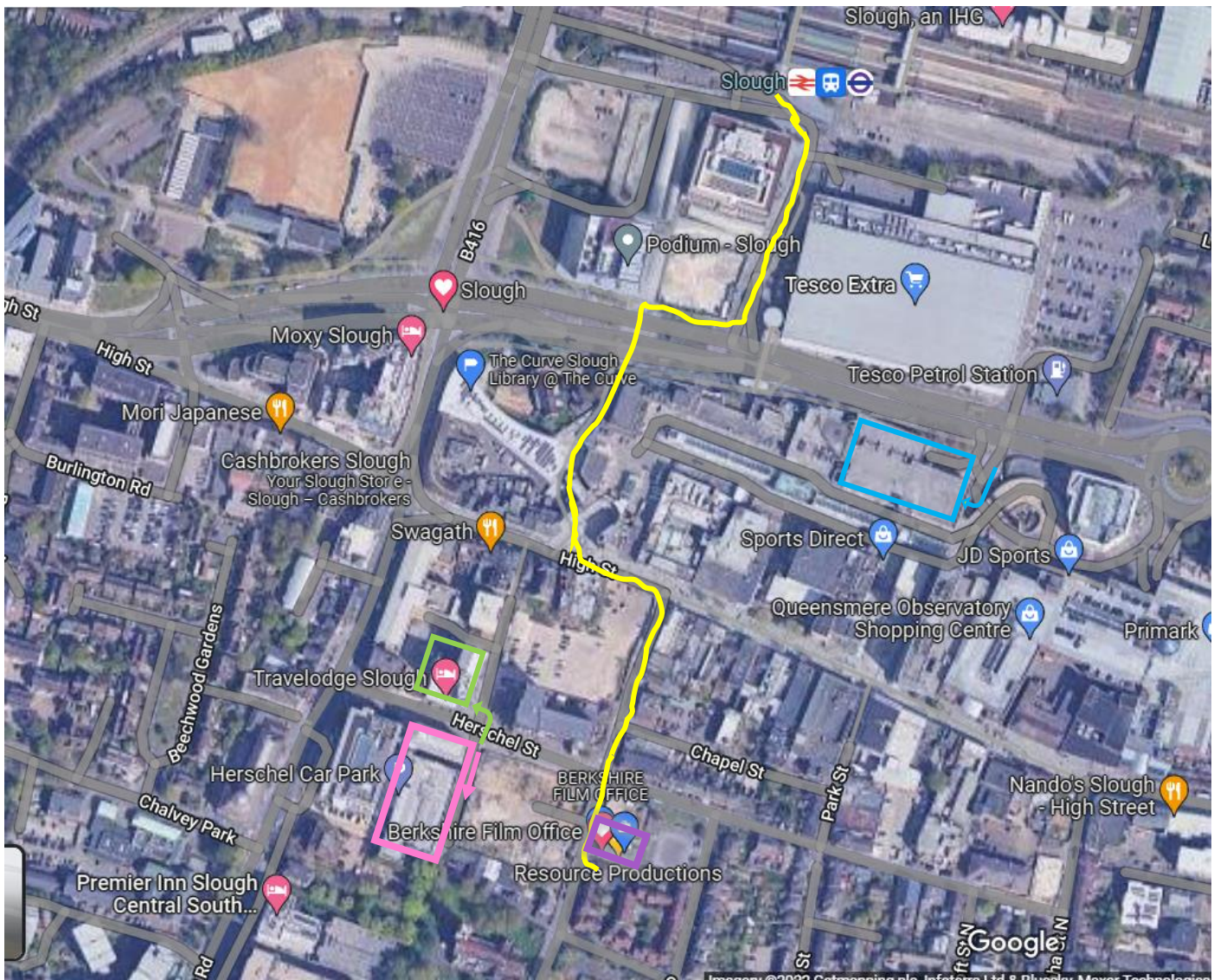
- 81- to Hounslow

You can also take the bus to Slough High Street and follow the yellow path on the image below.

TRAIN

9 Minute walk from Slough Station to 29 Church Street, Slough, SL1 1PL.

You can follow the yellow path on the image below.



PARKING

█ - **Buckingham Gardens Car Park:** 7.30am-9pm. Pay and Display: £4.20 for up to 4 hours.

The what3words for the car park entrance is `///minds.went.coins`

█ - **Herschel Car Park:** Open from 7am-10pm. Ticketed: £4 for up to 4 hours.

The what3words for the car park entrance is `///laying.slowly.kings`

█ - **Queensmere Shopping Centre Car Park:** Open 24 hrs. Ticketed: £1 per hour

The what3words for the car park entrance is `///highs.long.herds`

Disabled parking is on the ground floor of this car park.

Please note: This is QUEENSMERE Car Park, the one across the road from Tesco, not OBSERVATORY Car Park which is next to BT. Observatory Car Park is NOT 24 hours and closes at 7pm.

What3words is a global location app that gives a unique 3-word code to your precise location. It is also used by emergency services and delivery services.

PLEASE BE AWARE:

There are two 29 Church Streets in the area, one in Chalvey, and one in Central Slough. The Meet Up is at the 29 Church Street in Central Slough. Please make sure to use the postcode, SL1 1PL.